

Model 3707 PS TELEHANDLER



Performance

| | | |
|-------------------------------------|----------------|--------------|
| Rated capacity | 3700 kg | |
| Maximum lift height | 7.3 m | |
| Capacity at max height | 2000 kg | |
| Capacity at max reach | 1500 kg | |
| Lift speed (boom retracted) | | |
| Up | 7.5 sec | |
| Down | 5.1 sec | |
| Boom speed (extended/retracted) | | |
| Extended | 4.8 sec | |
| Retracted | 5.7 sec | |
| Top travel speed (standard engine) | 32 km/h | |
| | Standard: | Optional: |
| Engine: | 74.4kW 4 speed | 90kW 6 speed |
| Drawbar pull (loaded) | 69.3kN | 88.65kN |
| Outside turning radius (over tyres) | 3.75 m | |
| Operating weight | 8600 kg | |

Standard Specifications

Engine

| | |
|-----------------------------|------------------|
| Make and Model | Deutz TCD 3.6 L4 |
| No. of Cylinders | 4 |
| Displacement | 3.6 L |
| Standard engine gross power | 74.4kW |
| Maximum torque at 1600 RPM | 420Nm |
| Optional engine gross power | 90.0kW |
| Maximum torque at 1600 RPM | 480Nm |
| Fuel Tank Capacity | 150 L |

Transmission

- 4 Speed forward - 3 reverse powershift transmission
- 6 Speed forward - 3 reverse powershift transmission (optional)
- 4-wheel drive

Axles

- Front axle rigid mounted planetary steer axle
- Limited slip differential on front axle
- Rear axle trunnion mounted planetary steer axle

Brakes

- Service brakes are inboard wet disc brakes on front axle
- Parking brake external disc and calliper on input shaft of front axle

Tyres

- Standard Mitas 15.5/80-24 16ply
- Optional (more available) Pneumatic Michelin 440/80R24 power CL

Cab

- EROPS and FOPS fully glazed all weather cab
- 2 way adjustable mechanical suspension seat

Steering 4-Wheel

- Power steering with steering wheel spinner
- Two wheel/Four Wheel/Crab Steer with Rear Wheel assisted alignment

Instruments

- Engine glow start assist
- Fuel gauge
- Hour- and tachometer
- CE marking
- Telescope function reconfiguration
- Battery isolator switch
- Bucket mode switch

Hydraulic System-Implement

| | |
|----------|------|
| Capacity | 90 L |
|----------|------|

- 63cc variable displacement load sensing piston pump
- Maximum pump flow 150 L/min.
- Auxiliary hydraulic flow - intermittent 80 L/min.

Accessories & Options

- Rear hydraulic pick up hitch
- Hydraulic trailer braking
- Rotating Beacon
- Air conditioning
- Wide range of hitches, couplers, carriages and tyres
- Work Lights
- Boom Suspension
- Road Lights

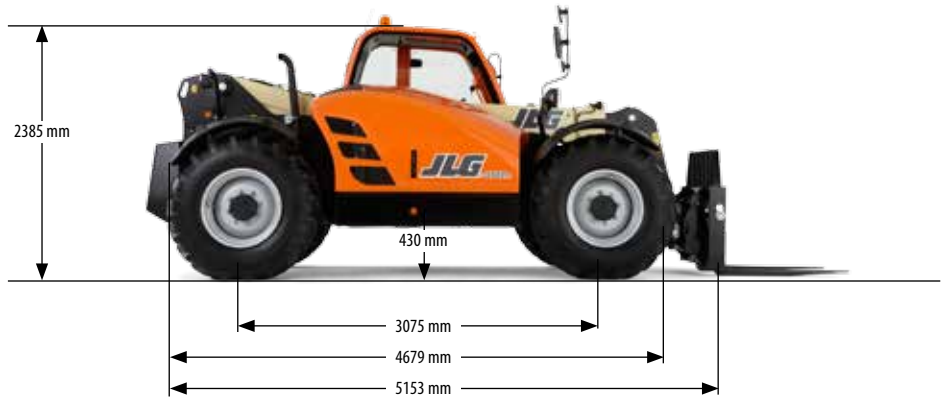
Attachments

| | |
|--------------------------------|--|
| Standard: | |
| Standard carriage | 4000 kg |
| Standard coupler | Mechanical quick switch coupler |
| Optional: | |
| Side shift carriage | 4000 kg |
| Fork positioning carriage | 1225 mm |
| Side shift pallet forks | 1200 mm x 50 mm x 100 mm |
| Pallet fork (4000 kg) | 1200 mm x 60 mm x 100 mm |
| Hitches | |
| Couplers | Rear hydraulic pick up hitch Hydraulic quick switch coupler JLG, JCB, Manitou Manual coupler JLG, JCB, Manitou |
| Concrete mixer bucket | |
| Multi-Purpose bucket with grab | 500 l capacity, 1100 kg |
| 4-1 Bucket | 2.4 m wide |
| Digging buckets | 2.4 m, 1.0 m ³ 2.4 m, 0.8 m ³ 2.4 m, 1.0 m ³ |
| Lifting Hook | |
| Truss Boom | 4000 kg 3.4 m, 1000 kg 3.6 m, 650 kg |

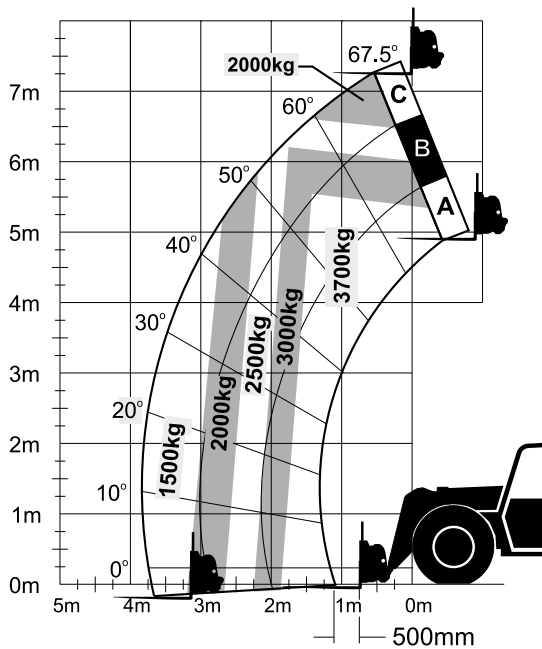
Model 3707 PS TELEHANDLER

Dimensions

All dimensions are approximate.



Load Chart and Dimensions



IMPORTANT

Rated lift capacities shown are with machine equipped with carriage and pallet forks. The machine must be level on a firm surface with undamaged, properly inflated tyres. Machine specifications and stability are based on rated lift capacities at specific boom angles and boom lengths. (If specifications are critical, the proposed application should be discussed with your dealer.) DO NOT exceed rated lift capacity loads, as unstable and dangerous machine conditions will result. DO NOT tip the machine forward to determine the allowable load.

Use only JLG approved attachments with proper material handler model/attachment load capacity charts displayed in the operator's cab.

Due to continuous product improvements, JLG Industries reserves the right to make specification and/or equipment changes without prior notification.



JLG Industries, Inc.

Polaris Avenue 63
2132 JH Hoofddorp
The Netherlands
Tel: +31 (0)23 565 5665
Fax: +31 (0)23 557 3750
www.jlgeurope.com

An Oshkosh Corporation Company